



# San Diego Community College District

## PROPOSITIONS S & N PROJECT FACT SHEET

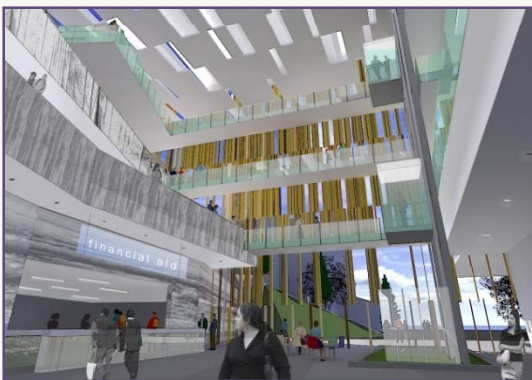
### Student Services Center

<b>Campus</b>	San Diego Mesa College
<b>Address</b>	7250 Mesa College Drive San Diego, CA 92111-4998 619.388.2604 <a href="http://www.sdmesa.edu">www.sdmesa.edu</a>
<b>Architect</b>	ARCHITECTS hanna gabriel wells
<b>Construction Manager</b>	PCL Construction
<a href="http://www.sdccdprops-n.com/Mesa-College/Projects/1241.aspx">http://www.sdccdprops-n.com/Mesa-College/Projects/1241.aspx</a>	



### Project Description

The new four-story, 85,000 gross square foot building will include new facilities for student services on campus. Services include Admissions, Financial Aid, Evaluations and Testing, Counseling, Student Government, Disabled Student Services, Information and Outreach, classrooms, conference areas and a Terrace Café. The project also includes a new express elevator between the lower parking lot and the upper campus.



View of atrium



View from lower plaza

### Special Features

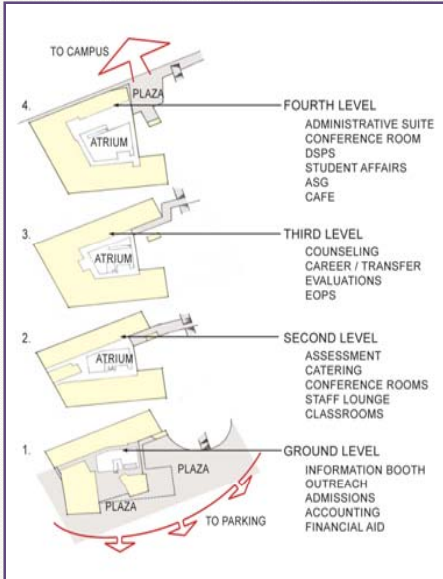
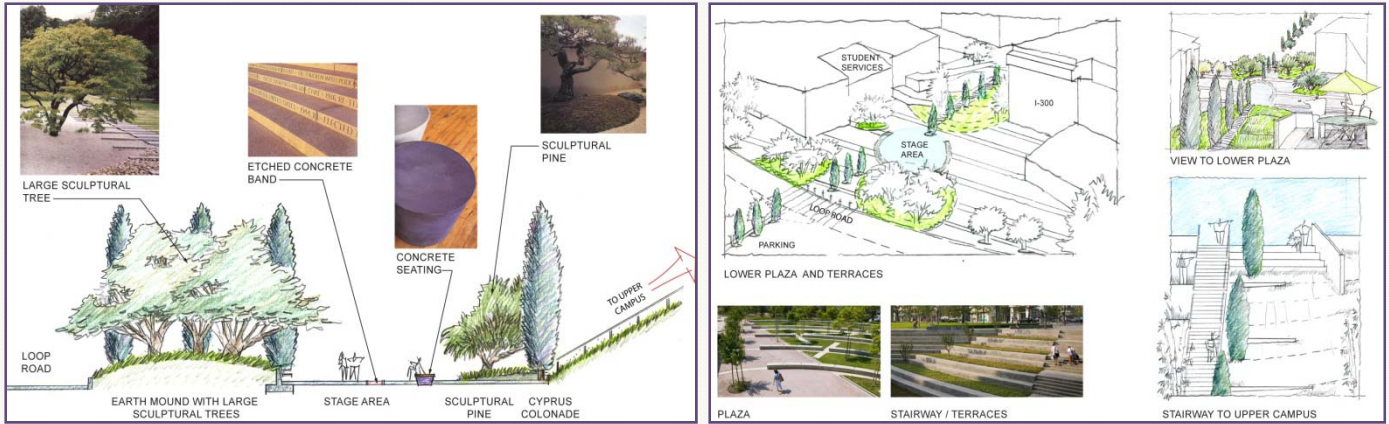
All of the departments are arranged around an open four-level atrium, where students can interact with each other and the various departments in a single location. Each department opens into the atrium without doors, encouraging students and department faculty to engage each other without barriers.

Each floor opens up onto a series of outdoor terraces that move up the hillside from the lower parking lot to the upper campus. A grand stair connects the upper and lower plazas to form a bold new campus entryway.

The colors of the building relate to the colors and textures of the trees that cover the hillside slopes adjacent to the project, connecting the building to its location on campus and creating a vibrant point at the new north entryway to the campus.

The building is designed to meet LEED Silver certification. Projected energy savings of 340,000 kWh annually are 38% better than state requirements. Water-efficient plumbing, irrigation and landscape will result in a water savings of 40% on the building use and 50% on landscape. The project will include materials and finishes that include recycled content, attention to Indoor air quality and the use of natural daylight.





**Fast Facts**

<b>Project Name</b>	Student Services Center
<b>Funding Source</b>	Proposition S
<b>Architect</b>	ARCHITECTS hanna gabriel wells
<b>Construction Manager</b>	PCL Construction
<b>Propositions S and N Program Manager</b>	Gafcon, Inc.
<b>Civil Engineer</b>	Snipes-Dye Engineering
<b>Electrical Engineer</b>	Michael Wall Engineers
<b>Mechanical Engineer</b>	McParlane and Associates
<b>Landscape Architect</b>	MLA Design Studio
<b>Campus Project Manager</b>	Daniel Sicile-Kira, Gafcon
<b>Construction Start Date</b>	Spring 2010
<b>Project Budget</b>	\$55.7 million
<b>Targeted Completion Date</b>	Fall 2011